



FONDAZIONE  
ECONOMIA  
TOR VERGATA



Economia Istituzioni  
Sviluppo Tecnologico



# 5 priorità per attivare nuovi dinamismi nella società italiana

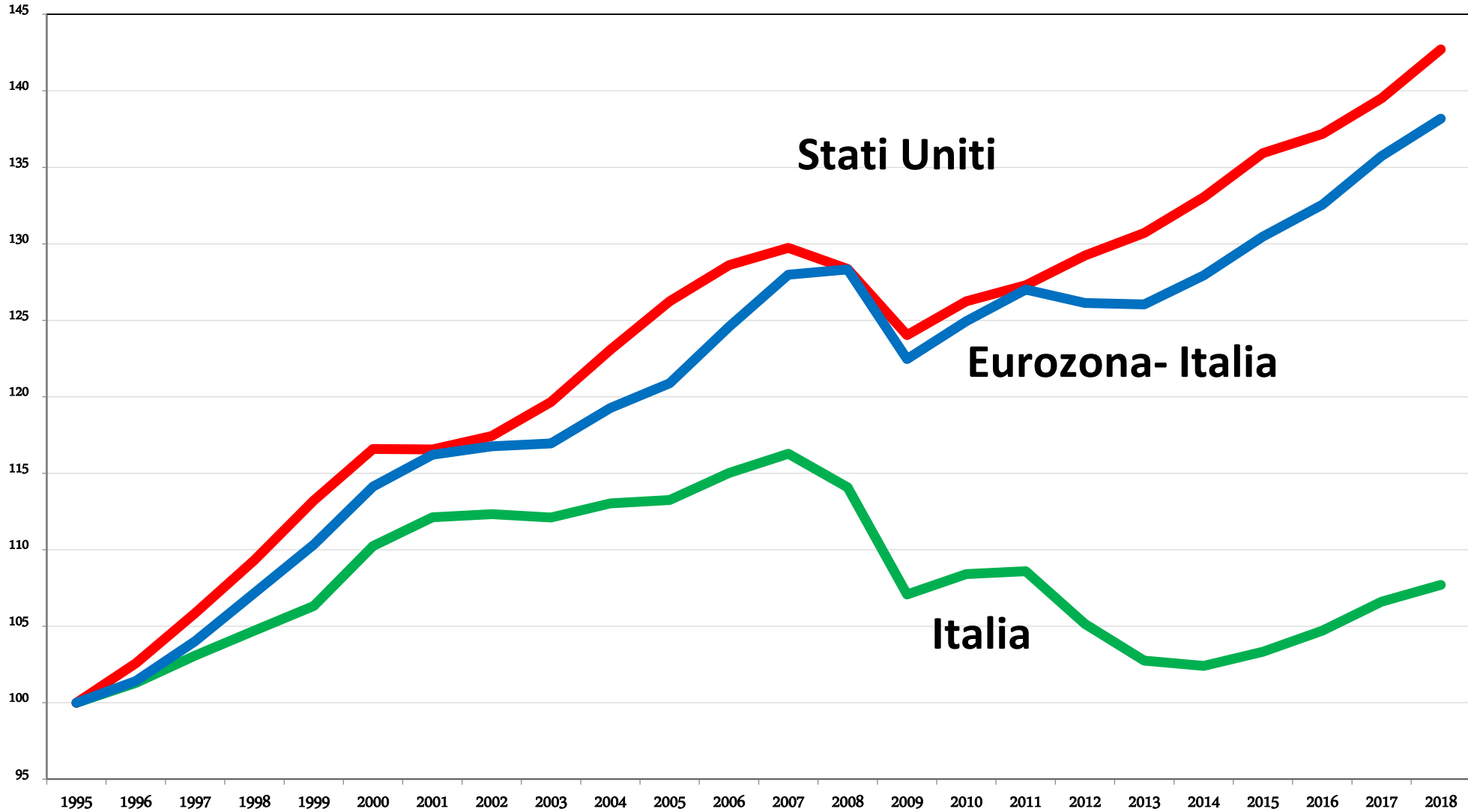
*28 febbraio 2020 - ore 10:00*

**Spazio Europa** - *Via IV novembre 149 - Roma*

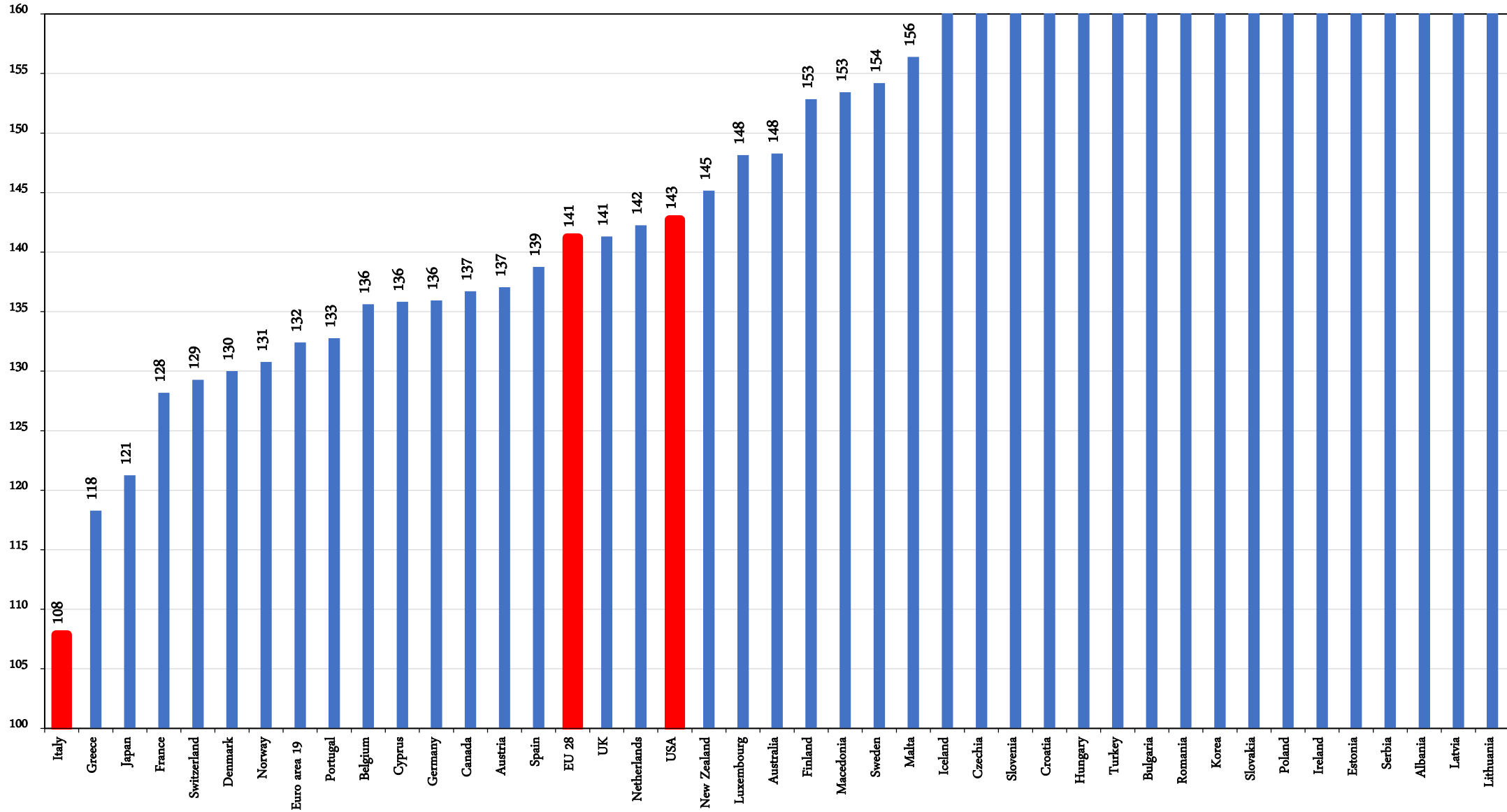
---

# Pil procapite (1995=100)

Fonte: Eurostat



# PIL pro-capite nel 2018 (1995=100, in termini reali)



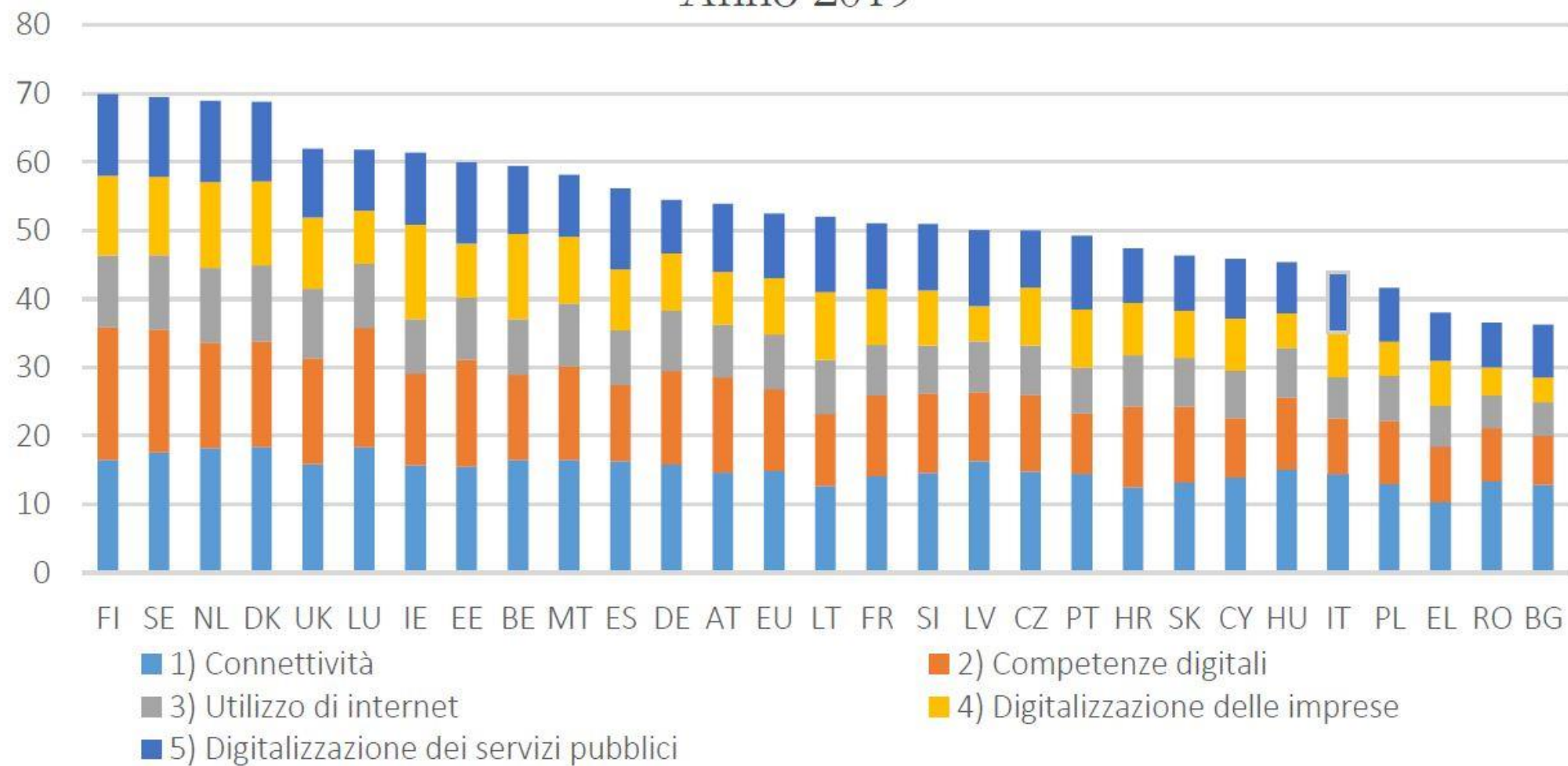
**Value added per person employed in 2016;  
(1997=100); Fonte: EU-KLEMS**

SECTOR	IT	DE	ES	FR	US
TOTAL MANUFACTURING	115,6	143,1	151,2	170,8	192,1
Food products	100,3	109,7	120,2	119,5	93,8
Textiles, wearing and leather and related products	118,6	131,9	146,6	188,4	155,6
Wood and paper products; printing and reproduction of recorded media	122,9	147,2	118,4	192,3	145,3
Chemicals and chemical products	106,2	133,4	107,9	191,9	128,2
Basic pharmaceutical products and pharmaceutical preparations	191,6	161,1	195,9	223,6	
Rubber and plastics products and other non-metallic mineral products	129,5	133,1	126,7	168,4	134,8
Basic metals and fabricated metal products except machinery and equipment	115,9	118,9	159,7	149,8	128,5
Computer electronic and optical products	103,3	439,8	227,0	429,9	1329,6
Electrical equipment	117,6	107,8	149,0	128,1	137,2
Machinery and equipment n.e.c.	107,5	91,9	137,2	172,9	133,4
Transport equipment	109,1	160,0	153,7	139,3	177,2
Other manufacturing; repair and installation of machinery and equipment	92,7	122,9	163,0	143,3	163,3

# TPF nel 2016; 1997=100. Fonte: UE-KLEMS

SECTOR	IT	DE	ES	FR	US
TOTAL MANUFACTURING	102,1	142,7	122,0	137,0	135,7
Food products	93,4	117,6	94,8	114,6	76,4
Textiles, wearing and leather and related products	96,9	128,8	112,3	147,9	116,4
Wood and paper products; printing and reproduction of recorded media	127,0	161,0	88,8	161,4	121,8
Chemicals and chemical products	85,6	146,0		115,4	67,1
Basic pharmaceutical products and pharmaceutical preparations	146,5	151,6		172,2	
Rubber and plastics products and other non-metallic mineral products	120,3	144,5	101,8	140,4	107,7
Basic metals and fabricated metal products except machinery and equipment	107,6	123,1	149,2	124,2	111,4
Computer electronic and optical products	75,9	451,4		359,7	926,8
Electrical equipment	94,9	102,5		83,8	115,3
Machinery and equipment n.e.c.	99,1	93,6	118,2	137,0	108,0
Transport equipment	93,2	150,4	144,4	95,1	138,8
Other manufacturing; repair and installation of machinery and equipment	94,8	127,1	146,7	127,6	119,9

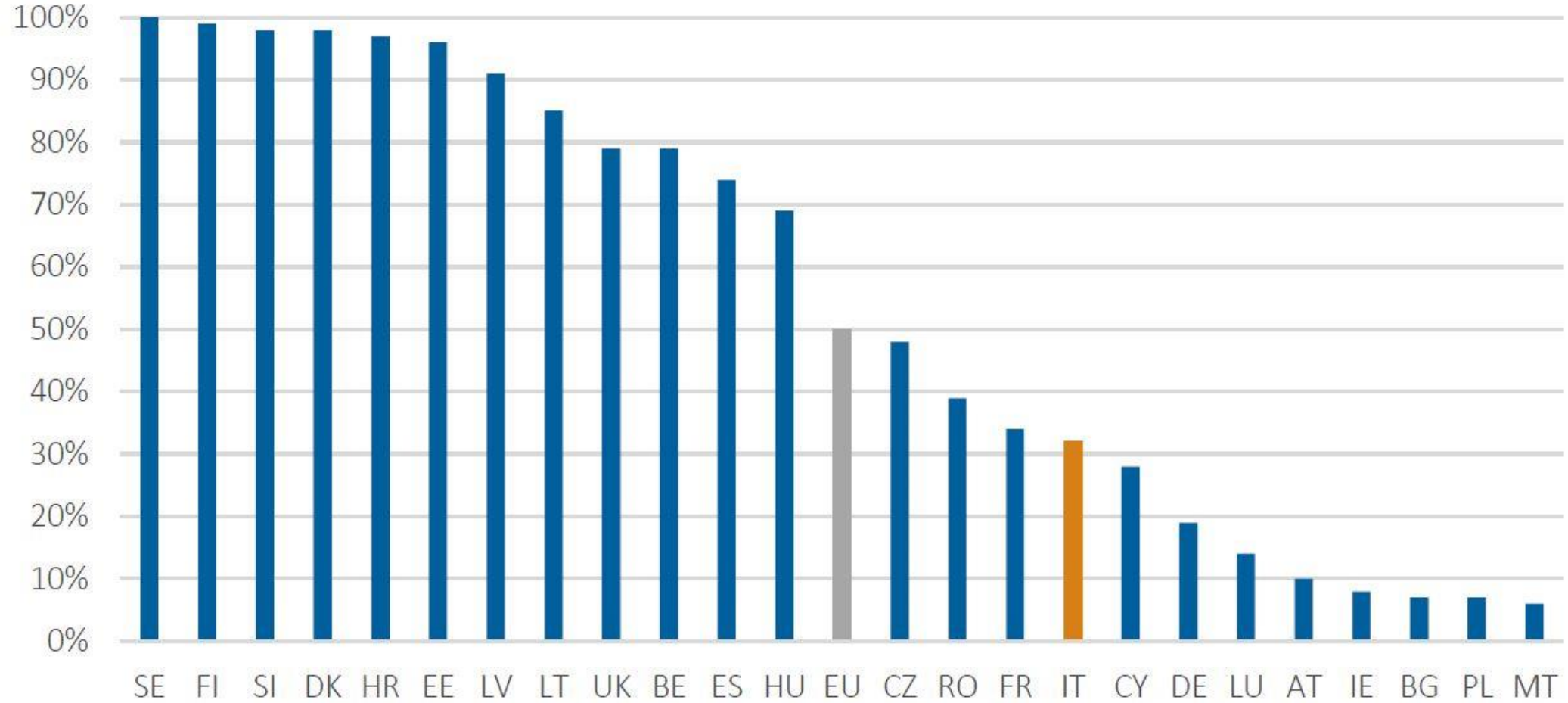
**Fig. 1: Indicatore DESI per singole dimensioni**  
Anno 2019



Fonte: DESI, European Commission, 2019

## Fig. 10: Ricette digitali

(Percentuale di medici di base che utilizzano ricette digitali)



**Table A.4. Size classes by country**

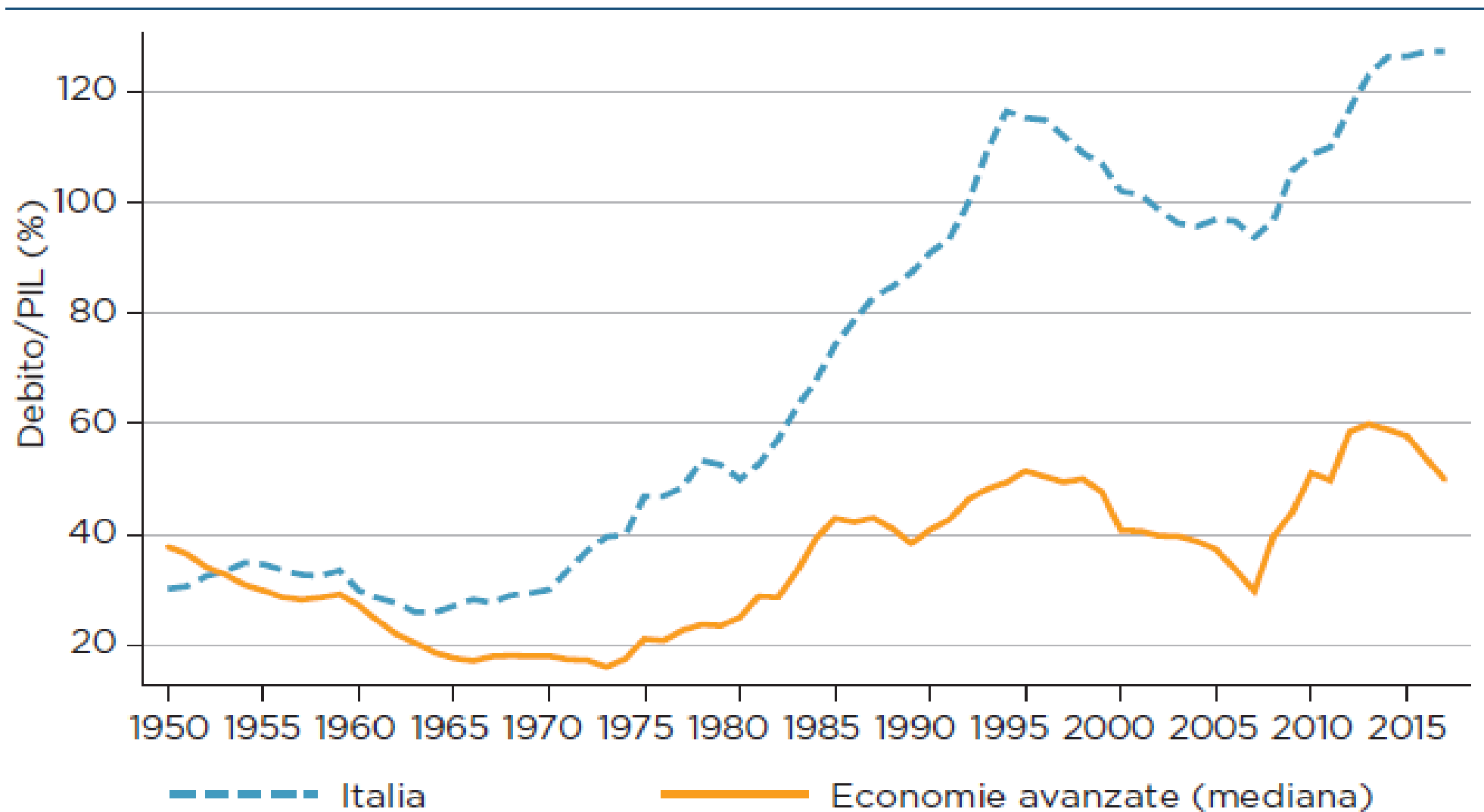
	AUS	AUT	BEL	CHN	DEU	DNK	ESP	EST	FIN	FRA	GBR	GRC	HUN	IDN	IND
<i>Employment</i>															
1-19 empl	0.0%	0.1%	3.0%		0.4%	0.2%	23.7%	11.1%	9.2%	7.6%	0.3%	0.0%	1.6%	0.0%	0.0%
20-249 empl	1.0%	15.8%	37.0%	0.0%	11.4%	1.2%	36.7%	43.8%	22.1%	23.7%	8.9%	3.9%	30.2%	0.7%	0.1%
250+ empl	99.0%	84.1%	60.0%	100.0%	88.1%	98.6%	39.6%	45.1%	68.7%	68.7%	90.7%	96.1%	68.2%	99.3%	99.9%
<i>Value Added</i>															
1-19 empl	0.0%	0.5%	4.9%		0.8%	0.5%	18.9%	8.3%	6.5%	6.8%	0.5%	0.0%	4.4%	0.1%	0.0%
20-249 empl	1.3%	16.7%	36.1%	0.0%	12.3%	3.3%	35.6%	34.3%	18.6%	20.9%	9.4%	2.7%	29.0%	4.8%	0.3%
250+ empl	98.7%	82.8%	59.0%	100.0%	86.9%	96.2%	45.5%	57.4%	74.8%	72.3%	90.1%	97.2%	66.5%	95.1%	99.7%
<i>Number of Firms</i>															
1-19 empl	2.6%	5.4%	34.1%		20.6%	53.1%	82.1%	59.4%	74.3%	68.1%	19.8%	1.4%	26.4%	1.5%	0.9%
20-249 empl	35.0%	70.8%	59.0%	2.8%	56.3%	30.6%	17.0%	38.2%	23.4%	29.3%	60.2%	39.7%	62.7%	16.4%	10.1%
250+ empl	62.4%	23.8%	6.9%	97.2%	23.1%	16.3%	0.9%	2.4%	2.3%	2.6%	20.0%	58.9%	10.9%	82.1%	89.0%
	IRL	ITA	JPN	KOR	LUX	LVA	NLD	POL	PRT	RUS	SVN	SWE	TUR	ZAF	Total
<i>Employment</i>															
1-19 empl	0.3%	17.1%	16.1%	6.0%	0.4%	6.6%	0.0%	0.1%	28.3%	0.0%	14.7%	14.9%	0.0%	0.0%	7.3%
20-249 empl	4.9%	42.5%	40.7%	37.0%	11.3%	29.0%	1.3%	8.7%	36.5%	1.2%	38.3%	17.4%	1.5%	0.1%	20.0%
250+ empl	94.8%	40.3%	43.2%	57.0%	88.3%	64.3%	98.7%	91.2%	35.1%	98.8%	47.0%	67.7%	98.5%	99.9%	72.7%
<i>Value Added</i>															
1-19 empl	1.9%	13.7%	15.1%	5.5%	1.4%	4.0%	0.1%	0.2%	21.0%	0.0%	13.6%	11.3%	0.2%	0.0%	5.5%
20-249 empl	8.9%	38.8%	30.6%	27.5%	11.0%	28.6%	1.9%	9.8%	36.0%	0.0%	36.5%	16.9%	1.6%	0.6%	18.2%
250+ empl	89.2%	47.6%	54.3%	67.0%	87.6%	67.4%	98.0%	90.0%	42.9%	100.0%	49.9%	71.8%	98.2%	99.4%	76.3%
<i>Number of Firms</i>															
1-19 empl	29.3%	73.9%	67.7%	49.6%	22.1%	65.8%	2.3%	4.5%	85.8%	5.7%	77.1%	86.9%	3.0%	0.6%	73.4%
20-249 empl	49.2%	24.6%	31.0%	45.9%	60.5%	27.4%	40.3%	53.5%	13.5%	68.1%	20.8%	12.2%	27.8%	5.6%	24.0%
250+ empl	21.5%	1.5%	1.3%	4.5%	17.4%	6.8%	57.4%	42.0%	0.7%	26.2%	2.1%	0.8%	69.2%	93.8%	2.6%

*Note:* This table reports the share of economic activity (averaged over time) accounted for by firms belonging to three size categories, separately for each country included in the analysis. The share of economic activity is measured either in terms of employment or in terms of value added. The table section referred as “Number of Firms” counts the percentage of firms belonging to each size-category.

*Source:* OECD calculations on Orbis data.



## Debito pubblico in Italia e nelle economie avanzate dal secondo dopoguerra





FONDAZIONE  
ECONOMIA  
TOR VERGATA



Economia Istituzioni  
Sviluppo Tecnologico



# **5 priorità per attivare nuovi dinamismi nella società italiana**

*28 febbraio 2020 - ore 10:00*

**Spazio Europa** - *Via IV novembre 149 - Roma*

---